

# The Painting



# Connection

Concord, California, U.S.A.

**A Monthly Newsletter**  
**Marianne Simpson, Editor**  
**Loretta Mateik, Webmaster**  
**Website: tollbridgetolers.org**

**2010 Issue Number Five**  
**May 2010**



## MESSAGE FROM THE PRESIDENT

**Jann Otvos**

The arrangement of our meeting room was discussed at length at our last board meeting. It was a lively discussion in which many points of view were expressed and many valuable observations were made. As you know, several months ago we began arranging the tables in a horse shoe configuration in the hopes that this would provide a less restrictive environment than the old four at a table set-up. The thinking was that with everyone sharing a “family style” set-up, there would be more opportunity to visit with each other. It was felt that the teaching environment would be better as well, with the teacher being able to address the group as a whole, rather than having to go from table to table. Unfortunately, the new set-up has fueled problems as well. It seems that the horseshoe shape makes the room seem smaller and that it is difficult to move around. Those in the center often feel “trapped” and many find themselves with their backs to speakers and teachers. In an effort to find the best room configuration and meeting environment, the board agreed to try different set-ups for the next few months. We are eager to get feedback and input from members.

A remark made by Roz and the discussion in general got me thinking about the importance of the room set-up. What is the purpose of our meetings and why is where we sit so important? Obviously the monthly meetings are held so that we can take care of the business of the chapter. I seriously doubt that many members come to the meeting for that reason, however. The projects members like taught at meetings are usually quick and fun or introductions to new techniques. Decorative painting techniques are seldom the focus of these projects. I believe that most members come to the meetings because they want to visit with each other, exchange information and ideas. This being the case, the configuration of tables

and chairs is secondary. We need to strive for time and a space that promotes fellowship. While we are enjoying our established friendships, we need to be attentive to the best way to welcome new members into our Toll Bridge Tolerers family. I am looking forward to “mixing it up” at our next couple of meetings. Even if the “perfect” seating arrangement is not discovered, change will certainly generate additional discussion.

Jann

## PROGRAMS

**Connie Oakley**  
**1<sup>st</sup> Vice President**

Our Program for May will be this adorable Santa and Reindeer plaque taught by Jeanie Strech. The project was handed out at our April meeting so there would be plenty of time to have it prepped. Please bring your normal painting supplies.





## MEMBERSHIP

**Jeanie Strech**  
**2<sup>nd</sup> Vice President**

We are very fortunate to have had 27 members and one guest, Suzanne Olson of Concord, at our last meeting. And we want to THANK Liz Doran for her great Stamping program. Some Awesome envelopes were created.

I would also like to welcome new member, Bonnie Vernon of Rohnert Park. Bonnie brings our membership total to 73. Great Work!

At our last meeting I introduced a questionnaire for all our members to fill out so we can get a better insight into our old and new found members. The questionnaire is included at the back of this newsletter. Please take a look at it and if you feel comfortable filling it out you can turn it in to me at any of the meetings. I hope you will all take this positively and not that we are snooping into your private business. If there are any questions you do not want to answer, that's OK. This will be for our own purposes and not for any other publication except our own Newsletter.

Please make the following email address changes to your Member Handbook:

Jeanie Strech: [jeaniepaints@comcast.net](mailto:jeaniepaints@comcast.net)  
Eileen Galea: [artdecoeileen@hotmail.com](mailto:artdecoeileen@hotmail.com)

If you have any changes to your email or other information, please let me know so I can update the rest of the membership.

Respectfully submitted,  
Jeanie Strech  
2nd VP/Membership

## CONDOLENCES

Our thoughts and prayers go out to Delta Lamb and her family over the sudden passing of her husband Steve.

*A Loved One is not gone, until they  
are forgotten!  
And to Live in the Hearts of those  
left behind is to Live Forever!*

Your friends at TBT are thinking of you and wishing you comfort during this difficult time.



## Seminars-PAINT-INS

Roz Borgerson and Connie Oakley



Ferdinand and Croak, designed by Janet Moreland, will be taught by Merlene Ryan on June 26<sup>th</sup> at 9:00 a.m. at the Plumbers Hall in Martinez.





## CONTRA COSTA COUNTY FAIR

**June 3,4,5,6**

<http://www.contracostafair.com/>

Hi all,

The dates for it are **June 3-6, Thursday thru Sunday**. So mark your calendar!

Start thinking about what you can enter, it is lots of fun to see your work on display and to show our community what we can do, and learn to do. Spread the joy of painting.

Thank you all, for all your help in the past, and to all of you who will help again and again!

**>>>> Hurry! Hurry! Hurry! <<<<**

### Contra Costa County Dates *Deadlines*

- **May 4** Forms and Entry Fees must be received, postmarked *deadline*
- **May 9** submitted online *deadline*
- **May 16** Hand Delivered entries 11:00a.m. - 5:00p.m.
- **May 17** Hand Delivered entries 3:00p.m. - 7:00p.m.
- **June 7** Pick up Exhibits 10:00a.m. – 8:00p.m.
- **June 8** Pick up Exhibits 11:00 a.m. – 7:00 p.m.



## WAYS & MEANS

Liz Doran

Just a reminder that our Charity Bunko fundraiser is Aug 28, 2010. I hope you are ALL painting a piece or thinking of something you can donate to the raffle.

Final details will come next month.

Liz Doran

## COMMUNITY PROJECT

Merlene Ryan

Thank you to Luci and Marianne for turning in memory boxes at the last meeting. If you took home boxes to paint or finish, remember to keep them on your to-do list. Please sign them (probably on the bottom) and add Toll Bridge Tolars.

The Kaleidoscope Door Project is finished! Lisa got us motivated and organized and it is done in time for their special events in May. The weather co-operated for a warm non-rainy day, which is what the paint needed. Participants were, Luci Flynn, Liz Dorn, Lisa Schall, Virginia Davison, Gloriann Lindberg, and Merlene Ryan. An extra thank-you hug to Liz and Luci who came for the morning and stayed all day.



## PAINT FOR FREEDOM: PASS IT ON PROGRAM

Check out the September/October 2007 issue of the Decorative Painter Magazine for six different Paint for Freedom card patterns. You can select one of those patterns, or create a design of your own. Contact Jann Otvos if you need a wooden card surface.

## TOLL BRIDGE TOLERS BOARD MEETING

First Lutheran Church, Concord, CA  
April 20, 2010

PRESENT: Marianne Simpson, Darlene Smith, Connie Oakley, Rose Marie Roza, Liz Doran, Lisa Schall, Karen Vecchi, Jeanie Strech, Jann Otvos, D. J. West

The meeting was called to order by President Jann Otvos at 6:52 pm.

The agenda for the general meeting was reviewed with a report from Liz Doran on the Bunko fundraiser, upcoming programs from Connie Oakley, County and State Fairs from D.J. West and the Kaleidoscope door painting project from Merlene Ryan.

Jeanie announced her new email address: [jeaniepaints@comcast.net](mailto:jeaniepaints@comcast.net). She suggested asking members to complete a member information sheet to learn about each other. She distributed a sample for the Board's review. We now have 73 members. The Board agreed to do the member information sheet. It was suggested the information for a member be printed in the newsletter as "Guess Who" with the answer somewhere in the newsletter or in the next issue. Jann asked Jeanie to go over the criteria for the new awards to be presented to members at the December Christmas dinner. Jann advised that Jeanie painted the nutcracker bentwood box on display and is donating it to the Food Bank auction. A copy of the nutcracker story was also in the box and it will be printed in the newsletter.

Jann announced that Delta Lamb's husband died unexpectedly on Sunday.

Connie reminded us that the October meeting/ornament exchange has been moved to Sunday, October 24, at 1:00 pm at the request of the members so there is time to meet, exchange ornaments and do a painting project. It will be held at the Plumbers' Hall in Martinez.

Jann commented on Marianne Simpson's email regarding changing the Board meeting time to 6:45 pm to allow more time for the Board meeting before members start arriving and setting up for the General meeting. The Board members agreed to this time change. Marianne had also asked about changing the table configuration. There were mixed feelings about this and several options were discussed. Jann felt the individual tables are not as inviting to new members. Attention to the teacher was not felt to be as good with this arrangement. Connie suggested having chairs set up for the meetings and timing the meetings to end at 8:00 pm with a 15-20 minute break for

socializing and eating and then set up for the program. Jann asked the Board to come up with options and bring this up at the May meeting. Jann will be on vacation for that meeting and Connie will chair it. A mentoring program pairing a Board member with a new member was also discussed.

Several cards for the troops were brought in tonight as well as memory boxes.

The meeting was adjourned at 7:25 pm

Respectfully submitted,  
Darlene Smith, Secretary

## TOLL BRIDGE TOLERS GENERAL MEETING



First Lutheran Church  
April 20, 2010

The meeting was called to order by President Jann Otvos at 7:30 pm with a quorum present. The minutes of the March meeting were approved as printed in the April newsletter (Luci Flynn/Rose Marie Roza). The Treasurer's Report was available for review. Guest Suzanne Olson was welcomed.

Correspondence: Jann received an email from the Lehigh Valley Decorative Painters of Allentown, PA asking permission to use Jann's Cards for the Troop verse as printed in our newsletter. Approval given. Members D.J. West, Cathy McCaughey and Loretta Mateik brought in painted cards. Jann noted all cards are needed no later than October for Veteran's Day. Memory boxes were also brought in by Marianne Simpson and Luci Flynn. Two hardbound books were available free to anyone interested (stenciling and boxes). Jann had catalogs available for the SDP convention, NCCC retreat and Seattle convention.

Bunko: Liz Doran reminded us that the Bunko party is August 28, 2010 at the Plumbers' Hall in Martinez. Lunch will be served as usual and the tickets will remain at \$25 per person. She needs painted pieces for the raffle and advised they could be brought to her at anytime.

Seminars: Connie Oakley advised the program for the May 18 meeting is a Santa piece taught by Jeanie Strech. She has the wood tonight which requires prep work before the meeting. Jeanie will teach her basket ornament from

the Ornament Frenzy on Sunday, May 2, at 1:00 pm at the Plumbers' Hall in Martinez.

Merlene will be teaching her moose piece on June 26 at the Plumbers' Hall in Martinez. An ornament size of this piece is also available for \$1.50.

As requested by the members, the October meeting will be held on Sunday, October 24, at 1:00 pm at the Plumbers' Hall in Martinez (Saturday was not available). This will allow sufficient time for the meeting, ornament exchange and a project.

County/State Fair: D.J. West advised the deadline for State Fair entries has passed. County Fair entries are due by May 9. She has entry forms and offered to deliver entries. County Fair workers are needed for June 3-6.

Hospitality: The book was circulated.

Kaleidoscope Door: Merlene advised this door is being painted this Sunday (4/25) and help is needed. Contact Lisa Schall to sign up.

Membership: Jeanie Strech reported we now have 73 members. She reviewed the criteria for the new awards (silver, gold and bronze) that will be presented to members at the December Christmas dinner.

Jeanie distributed a draft of a member information sheet for completion by members so we learn more about each other. The information on a member would be placed in the newsletter (Guess Who?) and the answer in the next issue. She asked for feedback on this suggestion and the form.

Announcements: Jann announced that Delta Lamb's husband Steven died unexpectedly last Sunday. Our condolences go out to her.

Jeanie will have a painting party at her home on Saturday, April 24, to complete the painting projects for the NCCC retreat. Bracelets will also be painted for all those registered for the retreat (92 to date).

Jann advised Carl Larson is doing a seminar with the Red Hat Chapter in Fair Oaks July 17-18, 2010.

Jeanie displayed one of two beautiful nutcracker bentwood boxes she painted and is donating one to the Contra Costa/Solano Food Bank auction. The history of the nutcracker was also adhered inside the box lid. This history will be printed in the newsletter.

Sue Plantania brought in a beautiful rooster and chicken she painted. She was encouraged to submit them to the County Fair.

Special Drawing: Liz advised the basket this evening included a bottle of wine and two glasses painted by Tamara Mannon. It was won by Jann Otvos.

The meeting was adjourned at 8:00 pm to Liz Doran's envelope program

Respectfully submitted,  
Darlene Smith, Secretary

## NEWSLETTER

Marianne Simpson



**Note: The following is our policy regarding the method by which you will receive your newsletter:**

If you have Internet access, you will be receiving an email to let you know that the current month's newsletter is available online at our website -

[www.tollbridgetolers.org](http://www.tollbridgetolers.org)

You will need to log onto the website and read or print the newsletter from there. If you need assistance, please contact Marianne Simpson at [maritoler@comcast.net](mailto:maritoler@comcast.net) or Loretta Mateik at [lmateik@comcast.net](mailto:lmateik@comcast.net). You must have Adobe Acrobat Reader to access and print your newsletter. There are instructions on our website which will allow you to receive your FREE copy of Acrobat Reader

If you do not have Internet access, you have the option of receiving your newsletter via the mail or as an email attachment. You need to let me know if you choose either of these options.

## THE NUTCRACKER STORY

by Carl Larson (as told by Heidi England, 2006)

Once upon a time, in Old Bavaria, lived a very kind and gentle King. He inherited the throne and many miles of beautiful farmlands and villages. On this land were many, many walnut trees. The king was very fond of the delicious meat within the shell but he had no way of cracking the hard shell. He sent out a message to all of his subjects and asked them to come up with a method to crack the shell without destroying the meat inside. The reward was to be a castle that looked down upon the Rhine.

First came the Farmer (Der Bauer), he used his shovel and rake, and hit the walnut. Each strike caused the walnut to go sailing down the hill. Time and time again, he tried, but was unable to crack the walnut. The King gave him a sack of seed for his effort.

Next, came the Carpenter (Der Baumeister), with his sharp saw in hand. He bowed to the King, and proceeded to try to saw the walnut, but the walnut just skipped out from under the saw, and rolled down the hill. He then tried his hammer, and the walnut was smashed into many pieces. The King thanked him and gave him a cart of wood, and a large bag of shiny nails.

The Hunter (Der Jager) assured the King, that he, indeed, could crack the walnut. He placed a large walnut in front of his target, took thirty steps back, raised his rifle and took a careful shot. The walnut shattered into small pieces. He agreed that his theory was not going to work. The King smiled at him, and gave him a bag of bullets, and warm thanks.

The King (Der Konig) told the villagers that he appreciated all of their efforts, and that someday someone would come up with the right idea. The crowd started to disperse, when a small, slightly built man, with a wooden toy soldier in his hand, approached the King. He asked the King if he would be allowed to show him his idea. The King asked the small man what he did. He replied that he was a Woodcarver (Der Holzschnitzer), and lifted a walnut and placed it in the little toy soldier's mouth and pulled the little handle on his back. The loud crack could be heard over the noise of the crowd. With a bowed head, he placed the walnut meat in the King's hand. The King was so happy with the tasty morsel. The Woodcarver continued to crack one after another for the King. The King told him that he would keep his promise and give him the castle overlooking the Rhine River. The humble Woodcarver thanked the King for his kindness, and said, "I cannot accept your generous offer, and instead I would like to have the shells of the walnuts to burn in my stove to keep me and my family warm throughout the long and cold winters." The kind and gentle King was so happy, he gave the Woodcarver a warm hug!

AND, THAT IS THE STORY OF HOW THE NUTCRACKER CAME TO BE IN 1735.

## "THE TRADING POST"

**Going to Seattle in Sept?** If you would like to drive and share expenses instead of flying contact Merlene 925-754-7997 or D'Ann 925-457-7211.

**For sale:** Deacon's bench and small cupboard. Suitable for re-painting. Garage sale prices, make offer. Merlene 925-754-7997



**For Sale:** Band saw, Table saw, RBI Hawk scroll saw, router and a few others things. If interested, contact Tamara Mannon 925-676-5492

If you have something you would like to sell, trade or give away; or if you have a recipe or idea you want to share, just send me an email with your tips, recipes, questions, comments or wish lists and I'll publish them in the newsletter. It's that easy but the only way this feature works is with YOUR input. So please, send your emails to [maritoler@comcast.net](mailto:maritoler@comcast.net).

Thanks,  
Marianne Simpson

## ARTS AND CRAFTS

Marianne Simpson

**May 15 and 16, 2010: 8<sup>th</sup> Annual Greg K. Leisure Farms Gourd Art Festival and Gourd Sale**  
21886 Knights Road  
Knights Landing,, CA 95645  
Saturday and Sunday, 9am to 5pm

**May 23, 2010: Kaleidoscope's Spring Boutique**

♥ *Local Artists & Crafters*  
♥ *Raffle-Lots of Great Prizes*  
♥ *Lots of Great Food and Baked Goods*



Please join us to help raise money for Kaleidoscope, a local non-profit group offering hope and connection for families living with cancer.

**Hours: 11:00 am – 2:00 pm**  
**Where: Byron United Methodist Church**  
**14671 Byron Highway**  
**Byron, CA**

If anyone has anything that they would like to donate for our raffle drawing please bring it to the TBT May Meeting or you may contact Liz Doran or Lisa Schall. Thanks

**June 26, 2010: Mrs. Grossman's annual summer warehouse sale.** 9 to 3 (six hours only!). This is always a huge happening and everyone, from our employees to our shoppers, love this event.

**July 17 and 18, 2010: Carl Larsen Hungarian Style Folk Art Chest** seminar in Fair Oaks. If anyone wants info they can contact, Carl, Jeanie Strech or Jann Otvos.

**Food Bank of Contra Costa and Solano County:**  
The food bank lady - Kathy Gleason, emailed me with the link to their auction fund raiser. The site is quite impressive and I think everyone should check it out: [theeventofthesummer.com](http://theeventofthesummer.com). I'm thinking Jay and I might have to check it out.

If anyone knows of any other craft fairs or events coming up, please pass the information on to me so I can list it in the upcoming Newsletters.



## SUNSHINE

Genie Miller

### May

5/10 Jacqueline D'Annuzio  
5/13 Robin Achterberg  
5/14 Patricia Brookshire  
5/15 Karolyn Reed  
5/24 Connie Oakley

### June

6/7 Merlene Ryan  
6/12 Vicki Gardiner  
6/14 Bev Canty  
6/15 Barbara Flavin  
6/19 Virginia Davison  
6/20 Cookie Tillman  
6/21 Kathy Prewitt  
6/25 Darlene Smith  
6/26 Agnes Ketterman Dobert  
6/26 Linda Sharp

If the letter carrier doesn't deliver your birthday card, or if you know of someone in need of a little "Sunshine", please let me know.

Thanks,  
Genie Miller, Sunshine

## HOSPITALITY

Barbara Bouchet

Snacks: Connie Oakley, Marianne Simpson, Lucille Hart and Jeanie Strech

Beverages: Karen Vecchi, Brenda Helm and Genie Miller

Ice: Shirley Irwin

Thanks, Barbara Bouchet, Hospitality.

### **Purpose**

The purpose of the society is a central dissemination point for information about activities related to decorating painting; raise and maintain a high standard for the art of decorative painting; and stimulate interest in and appreciation for the art form.

**Notice: First Lutheran church is collecting foodstuffs year round for Project Share. Any donations would be welcome. Contact Darlene Smith for details.**

### **EXECUTIVE BOARD OFFICERS**

President	Jann Otvos	925-706-8365
	<a href="mailto:jjotvos@comcast.net">jjotvos@comcast.net</a>	
1 <sup>st</sup> V.P., Prog.	Connie Oakley	925-825-3851
	<a href="mailto:oakley1@liln.gov">oakley1@liln.gov</a>	
2 <sup>nd</sup> V.P., Mem.	Jeanie Strech	707-838-6489
	<a href="mailto:jeaniepaints@comcast.net">jeaniepaints@comcast.net</a>	
Secretary	Darlene Smith	925-689-8557
	<a href="mailto:dsmit@astound.net">dsmit@astound.net</a>	
Treasurer	Karen Vecchi	925-228-0409
	<a href="mailto:Karenvecchi@sbcglobal.net">Karenvecchi@sbcglobal.net</a>	
Newsletter	Marianne Simpson	925-754-1362
	<a href="mailto:maritoler@comcast.net">maritoler@comcast.net</a>	
Ways & Means	Liz Doran	925-634-5137

### **Committee Chairpersons**

N.C.C.C. Rep.	Jann Otvos	925-706-8365
	<a href="mailto:jjotvos@comcast.net">jjotvos@comcast.net</a>	
	Karen Vecchi	925-228-0409

[karenvecchi@sbcglobal.net](mailto:karenvecchi@sbcglobal.net)  
 Barbara Flavin 925-779-9596  
[hlpinghand@aol.com](mailto:hlpinghand@aol.com)  
 Sunshine Genie Miller 510-223-5148  
[millereugenia@att.net](mailto:millereugenia@att.net)  
 Handbook Karen Vecchi 925-228-0409  
[karenvecchi@sbcglobal.net](mailto:karenvecchi@sbcglobal.net)  
 Historian Loretta Mateik 707-782-1082  
[lmateik@comcast.net](mailto:lmateik@comcast.net)  
 Seminars/Paint-in Roz Borgerson 925-825-6547  
[Rogerroz1@astound.net](mailto:Rogerroz1@astound.net)  
 Connie Oakley 925-825-3851  
[Oakley1@llnl.gov](mailto:Oakley1@llnl.gov)  
 Rewards & Shirley Irwin 925-458-3454  
 Recognition [shirleyirwin@sbcglobal.net](mailto:shirleyirwin@sbcglobal.net)  
 County Fair DJ West 925-679-0676  
[debrwst@aol.com](mailto:debrwst@aol.com)  
 Librarian Lucille Hart 925-672-4169  
[Lhart32@astound.net](mailto:Lhart32@astound.net)  
 Community Projects Merlene Ryan 925-754-7997  
[Merlenery@comcast.net](mailto:Merlenery@comcast.net)  
 Parliamentarian Connie Oakley 925-825-3851  
[Oakley1@llnl.gov](mailto:Oakley1@llnl.gov)  
 Publicity Tamara Mannon 925-676-5492  
[temann@att.net](mailto:temann@att.net)

Hospitality Barbara Bouchet 925-682-5312  
[Audret9@hotmail.com](mailto:Audret9@hotmail.com)  
 Nominating Lisa Schall 925-699-4226  
[Tjschall01@yahoo.com](mailto:Tjschall01@yahoo.com)  
 Decorative Painting Jo Iaconis 925-432-6832  
 Month – East Cty [iaconis@comcat.net](mailto:iaconis@comcat.net)  
 Decorative Painting Vivian Roubal 925-216-8761  
 Month –Central Cty [msroubal@hotmail.com](mailto:msroubal@hotmail.com)  
 Website Loretta Mateik 707-782-1082  
[lmateik@comcast.net](mailto:lmateik@comcast.net)

The costs of advertising in this newsletter are as follows:

		Monthly	Yearly
Business card	Member	\$ 4.00	20.00
	Non Member	5.00	25.00
1/4 Page	Member	7.50	37.50
	Non Member	10.00	50.00
1/2 Page	Member	10.00	50.00
	Non Member	15.00	75.00
Full Page	Member	15.00	75.00
	Non Member	20.00	100.00



## MEMBERSHIP QUESTIONNAIRE

SDP # \_\_\_\_\_ Chapter affiliations \_\_\_\_\_

Name \_\_\_\_\_

Address \_\_\_\_\_ ZIP \_\_\_\_\_

Phone \_\_\_\_\_ alt \_\_\_\_\_ Cell \_\_\_\_\_

Married \_\_\_\_\_ Single \_\_\_\_\_ Divorced \_\_\_\_\_ Widowed \_\_\_\_\_ How long to any question \_\_\_\_\_

If married husbands name \_\_\_\_\_

Do you work \_\_\_\_\_ Retired \_\_\_\_\_ What is /was your work \_\_\_\_\_

Do you have children \_\_\_\_\_ Boys \_\_\_\_\_ Girls \_\_\_\_\_ Their names \_\_\_\_\_

Do you have Grandchildren \_\_\_\_\_ How many \_\_\_\_\_

Favorite pets...Dogs \_\_\_\_\_ Cats \_\_\_\_\_ Horses \_\_\_\_\_ Pigs \_\_\_\_\_ Birds \_\_\_\_\_ Other \_\_\_\_\_

Painting how long \_\_\_\_\_

Any offices held in the Chapter \_\_\_\_\_

Are you a teacher \_\_\_\_\_ what medium \_\_\_\_\_

Favorite tole painting teacher/artist and why \_\_\_\_\_

\_\_\_\_\_

Favorite paint color \_\_\_\_\_ Favorite brush or painting tool \_\_\_\_\_

Painting goal or dream \_\_\_\_\_

Hobbies other than painting \_\_\_\_\_

Please give any other information that might be of interest to fellow Chapter members.

Please sign this form if you give us permission

to use this interview in the newsletter \_\_\_\_\_

**THE TOLL BRIDGE TOLERS**

Are Proud To Present

**Merlene Ryan**

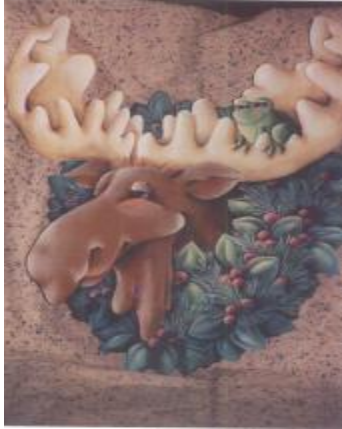
**June 26, 2010**

Plumbers Hall

1308 ROMAN WAY, MARTINEZ, CA

9:00 AM – 4 PM

Ferdinand and Croak by Janet Moreland



**REGISTRATION FORM**

**NAME:** \_\_\_\_\_

**ADDRESS:** \_\_\_\_\_

**CITY/ZIP:** \_\_\_\_\_

**TELEPHONE:** \_\_\_\_\_ **EMAIL ADDRESS:** \_\_\_\_\_

**REGISTRATION FEES:** This paint-in is offered for Toll Bridge Tolars or NCCC members. If you are a non-member, then please add \$5.00. Registration fees are listed below. **Registration is due by Friday, June 4, 2010.** If you have any questions, please contact Roz Borgerson at (925) 825-6547 or email [rogerroz1@astound.net](mailto:rogerroz1@astound.net); or Connie Oakley at (925) 423-0704 or email [oakley1@ltnl.gov](mailto:oakley1@ltnl.gov).

REGISTRATION FEES	TOLL BRIDGE TOLERS/ NCCC MEMBERS	NON TOLL BRIDGE TOLERS/NCCC MEMBERS
<b>Saturday, June 26th</b>	<b>\$32.00 (includes surface cost)</b>	<b>\$37.00 (includes surface cost)</b>
<b>Add'l. Surface Fee:</b>	<b>\$15.00 ea. -- No. Needed: _____</b>	<b>\$15.00 ea. -- No. Needed: _____</b>
<b>Total Enclosed:</b>	<b>\$ _____</b>	<b>\$ _____</b>

**NOTE:** All persons registering for the paint-in must use this registration form. Payment must accompany registration form. All classes have a *No Smoking Policy*. Please remember that Registration Fees are *not refundable but are transferable*. If the paint-in is cancelled, teaching fees will be refunded. No meals will be provided.

Please make checks payable to **Toll Bridge Tolars** and send Registration Form and fees to:  
Connie Oakley, 1103 Crest Ridge Lane, Concord, CA 94521-4539